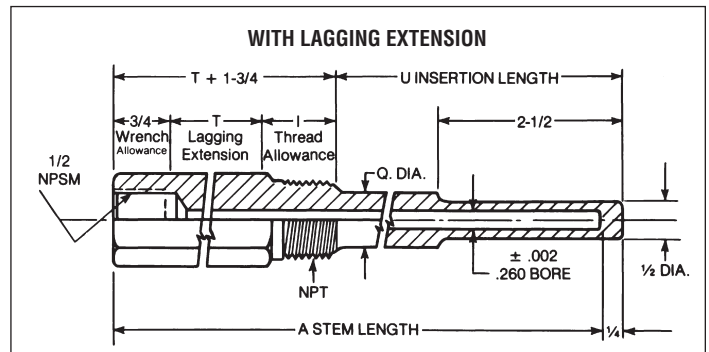
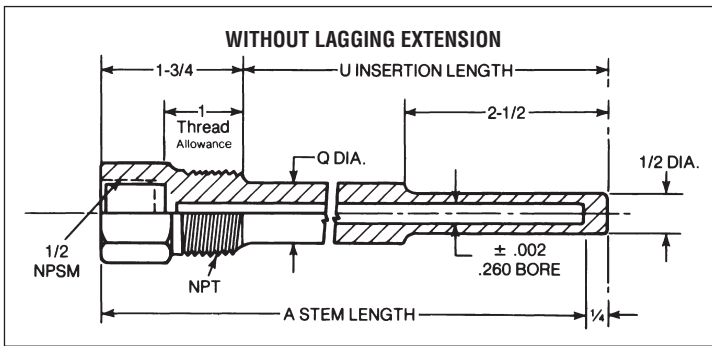


FOR INDUSTRIAL BIMETAL THERMOMETERS WITH .250" DIAMETER ELEMENTS

- .385" bore available for use with instruments with .375" diameter elements
- All Weksler standard thermowells are bored from solid bar stock



3/4 NPT – CATALOG NUMBERS						
A	U	Q	BRASS	STEEL	304 SS	316 SS
4	2 1/2	—	S3B4	S3S4	S3G4	S3J4
6	4 1/2	3/4	S3B6	S3S6	S3G6	S3J6
9	7 1/2	3/4	S3B9	S3S9	S3G9	S3J9
12	10 1/2	3/4	S3B2	S3S2	S3G2	S3J2
15	13 1/2	3/4	S3B5	S3S5	S3G5	S3J5
18	16 1/2	3/4	S3B8	S3S8	S3G8	S3J8
24	22 1/2	3/4	S3BT	S3ST	S3GT	S3JT

3/4 NPT – CATALOG NUMBERS							
A	U	T	Q	BRASS	304 STEEL	316 SS	SS
6	2 1/2	2	—	L3B6	L3S6	L3G6	L3J6
9	4 1/2	3	3/4	L3B9	L3S9	L3G9	L3J9
12	7 1/2	3	3/4	L3B2	L3S2	L3G2	L3J2
15	10 1/2	3	3/4	L3B5	L3S5	L3G5	L3J5
18	13 1/2	3	3/4	L3B8	L3S8	L3G8	L3J8
24	19 1/2	3	3/4	L3BT	L3ST	L3GT	L3JT

1 NPT – CATALOG NUMBERS						
A	U	Q	BRASS	STEEL	304 SS	316 SS
4	2 1/2	—	S4B4	S4S4	S4G4	S4J4
6	4 1/2	7/8	S4B6	S4S6	S4G6	S4J6
9	7 1/2	7/8	S4B9	S4S9	S4G9	S4J9
12	10 1/2	7/8	S4B2	S4S2	S4G2	S4J2
15	13 1/2	7/8	S4B5	S4S5	S4G5	S4J5
18	16 1/2	7/8	S4B8	S4S8	S4G8	S4J8
24	22 1/2	7/8	S4BT	S4ST	S4GT	S4JT

1 NPT – CATALOG NUMBERS							
A	U	T	Q	BRASS	304 STEEL	316 SS	SS
6	2 1/2	2	—	L4B6	L4S6	L4G6	L4J6
9	4 1/2	3	7/8	L4B9	L4S9	L4G9	L4J9
12	7 1/2	3	7/8	L4B2	L4S2	L4G2	L4J2
15	10 1/2	3	7/8	L4B5	L4S5	L4G5	L4J5
18	13 1/2	3	7/8	L4B8	L4S8	L4G8	L4J8
24	19 1/2	3	7/8	L4BT	L4ST	L4GT	L4JT

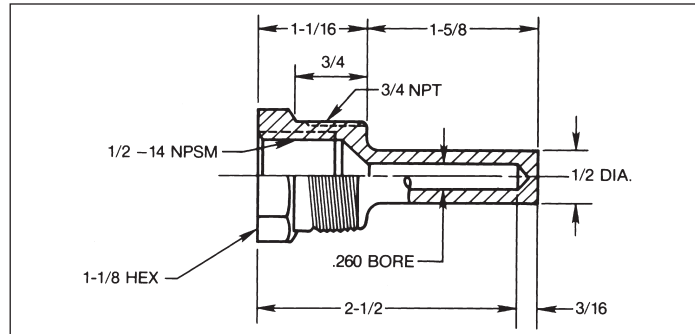
Brass wells are not recommended for installations involving high pressures and/or temperatures over 400°F. Brass cap and chain available to keep bore clean when not in use. .260" bore standard. If .385" bore is required:
 (1) Add the letter K at the end of the catalog no.;
 (2) "Q" diameter is changed to 49/64" along entire length of insertion ("U" dimension).
 For pressure – temperature rating use Table 1 on page 89.

NOTE: 2 1/2" STEM THERMOMETERS USE SPECIAL LIMITED SPACE WELLS.

LIMITED SPACE WELLS

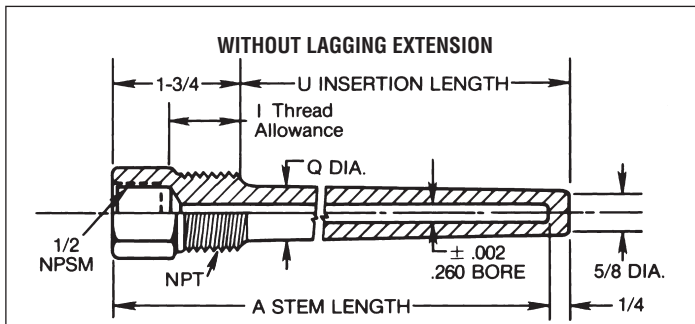
Fits Weksler 3" and 5" bimetal thermometers with 2½" stem length. It is recommended that these be used only when space is such a critical factor that wells for 4" stem length bi-metals cannot be utilized.

IMPORTANT NOTE: The above limited space thermowells should not be used with Weksler 3" or 5" bimetals with the following ranges: 25/125°F, -40/120°F, 0/150°F, 50/500°F, 150/750°F, 0/50°C, -50/50°C, 0/300°C and 100/400°C. These ranges must use thermometers with 4" minimum stem length.


CATALOG NUMBERS

	BRASS	STEEL	304 SS	316 SS
3/4 NPT	S3B1	S3S1	S3G1	S3J1
1 NPT	S4B1	S4S1	S4G1	S4J1

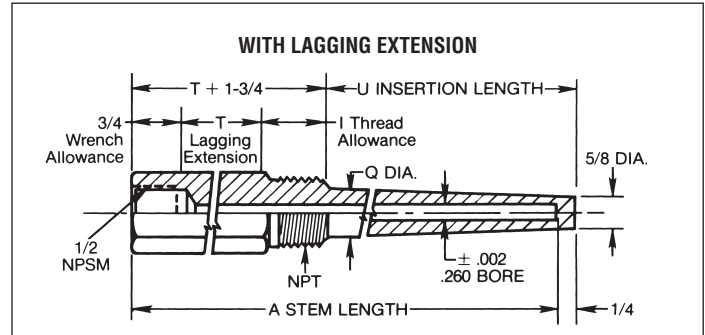
Brass wells are not recommended for installations involving high pressures and/or temperatures over 400°F.

HEAVY DUTY THREADED WELLS

¾ NPT – CATALOG NUMBERS

A	U	Q	STEEL	304 SS	316 SS
4	2½	—	S3S4H	S3G4H	S3J4H
6	4½	⅞	S3S6H	S3G6H	S3J6H
9	7½	⅞	S3S9H	S3G9H	S3J9H
12	10½	⅞	S3S2H	S3G2H	S3J2H
15	13½	⅞	S3S5H	S3G5H	S3J5H
18	16½	⅞	S3S8H	S3G8H	S3J8H
24	22½	⅞	S3STH	S3GTH	S3JTH

1 NPT – CATALOG NUMBERS

A	U	Q	STEEL	304 SS	316 SS
4	2½	1⅙	S4S4H	S4G4H	S4J4H
6	4½	1⅙	S4S6H	S4G6H	S4J6H
9	7½	1⅙	S4S9H	S4G9H	S4J9H
12	10½	1⅙	S4S2H	S4G2H	S4J2H
15	13½	1⅙	S4S5H	S4G5H	S4J5H
18	16½	1⅙	S4S8H	S4G8H	S4J8H
24	22½	1⅙	S4STH	S4GTH	S4JTH


¾ NPT – CATALOG NUMBERS

A	U	T	Q	STEEL	304 SS	316 SS
6	2½	2	⅞	L3S6H	L3G6H	L3J6H
9	4½	3	⅞	L3S9H	L3G9H	L3J9H
12	7½	3	⅞	L3S2H	L3G2H	L3J2H
15	10½	3	⅞	L3S5H	L3G5H	L3J5H
18	13½	3	⅞	L3S8H	L3G8H	L3J8H
24	19½	3	⅞	L3STH	L3GTH	L3JTH

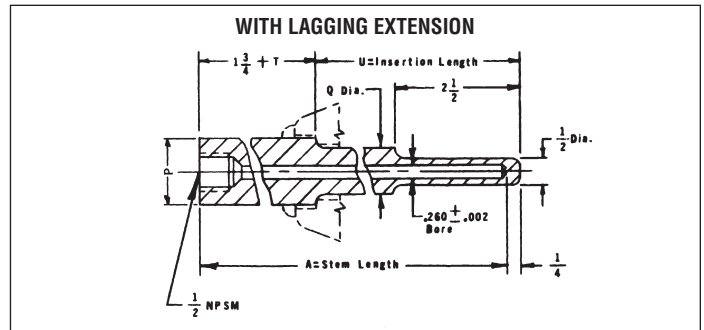
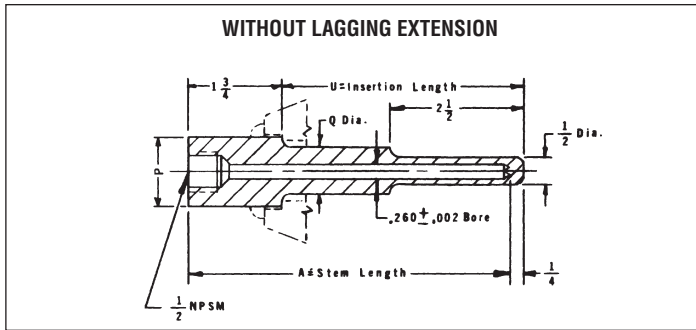
1 NPT – CATALOG NUMBERS

A	U	T	Q	STEEL	304 SS	316 SS
6	2½	2	1⅙	L4S6H	L4G6H	L4J6H
9	4½	3	1⅙	L4S9H	L4G9H	L4J9H
12	7½	3	1⅙	L4S2H	L4G2H	L4J2H
15	10½	3	1⅙	L4S5H	L4G5H	L4J5H
18	13½	3	1⅙	L4S8H	L4G8H	L4J8H
24	19½	3	1⅙	L4STH	L4GTH	L4JTH

Brass cap and chain available to keep bore clean when not in use.
.260" bore standard. If .385" bore is required:

- (1) change the last digit of the catalog no. from H to L;
 - (2) "Q" diameter will be 1⅙" on all and diameter at the end of taper (bottom of well) will be 49/64".
- For pressure and temperature rating use Table 2 on page 89.

NOTE: ALL WEKSLER STANDARD THERMOWELLS ARE BORED FROM SOLID BAR STOCK.



3/4 NPT – CATALOG NUMBERS

A	U	Q	STEEL	304 SS	316 SS
4	2½	½	S5S4	S5G4	S5J4
6	4½	¾	S5S6	S5G6	S5J6
9	7½	¾	S5S9	S5G9	S5J9
12	10½	¾	S5S2	S5G2	S5J2
15	13½	¾	S5S5	S5G5	S5J5
18	16½	¾	S5S8	S5G8	S5J8
24	22½	¾	S5ST	S5GT	S5JT

3/4 NPT – CATALOG NUMBERS

A	U	T	Q	STEEL	304 SS	316 SS
6	2½	2	½	L5S6	L5G6	L5J6
9	4½	3	¾	L5S9	L5G9	L5J9
12	7½	3	¾	L5S2	L5G2	L5J2
15	10½	3	¾	L5S5	L5G5	L5J5
18	13½	3	¾	L5S8	L5G8	L5J8
24	19½	3	¾	L5ST	L5GT	L5JT

1 NPT – CATALOG NUMBERS

A	U	Q	STEEL	304 SS	316 SS
4	2½	½	S6S4	S6G4	S6J4
6	4½	7/8	S6S6	S6G6	S6J6
9	7½	7/8	S6S9	S6G9	S6J9
12	10½	7/8	S6S2	S6G2	S6J2
15	13½	7/8	S6S5	S6G5	S6J5
18	16½	7/8	S6S8	S6G8	S6J8
24	22½	7/8	S6ST	S6GT	S6JT

1 NPT – CATALOG NUMBERS

A	U	T	Q	STEEL	304 SS	316 SS
6	2½	2	½	L6S6	L6G6	L6J6
9	4½	3	7/8	L6S9	L6G9	L6J9
12	7½	3	7/8	L6S2	L6G2	L6J2
15	10½	3	7/8	L6S5	L6G5	L6J5
18	13½	3	7/8	L6S8	L6G8	L6J8
24	19½	3	7/8	L6ST	L6GT	L6JT

*NOMINAL PIPE SIZE ("P" DIMENSION)
¾" Weld Connection = 1.050" Diameter
1" Weld Connection = 1.315" Diameter

Brass cap and chain available to keep bore clean when not in use.
 .260" bore standard. If .385" bore is required:
 (1) add the letter K to the end of the catalog no. ;
 (2) "Q" dimension is changed to 49/64" along entire length of insertion ("U" dimension).
 For pressure and temperature rating use Table below.
NOTE: ALL WEKSLER STANDARD THERMOWELLS ARE BORED FROM SOLID BAR STOCK.

**PRESSURE-TEMPERATURE RATING
 (LBS. PER SQ. INCH)**

(Weld-in Type)

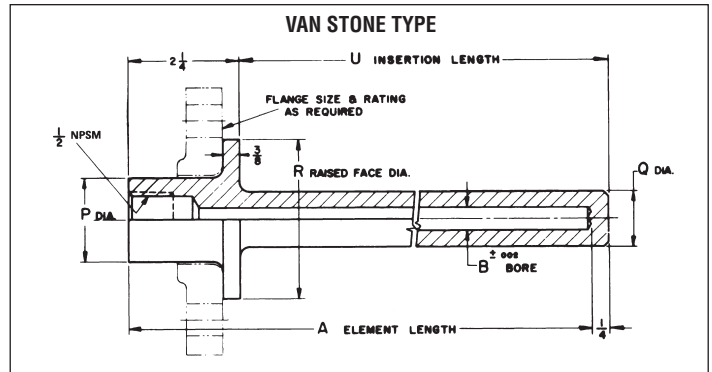
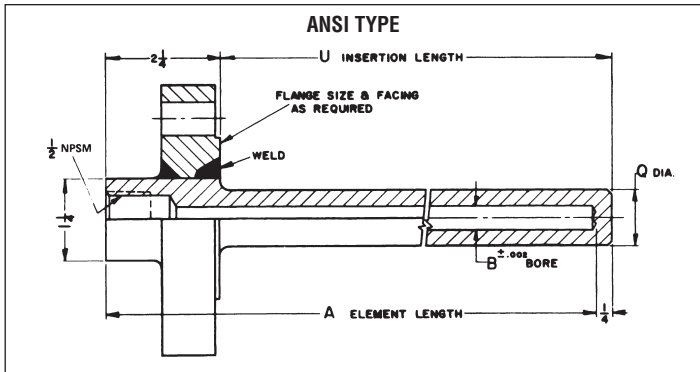
(Heavy Duty Threaded)

TABLE 1

MATERIAL	TEMPERATURE – °F						
	70°	200°	400°	600°	800°	1000°	1200°
Brass 5000	4200	1000	—	—	—	—	—
Carbon Steel	5200	5000	4800	4600	3500	1500	—
A.I.S.I.-304	7000	6200	5600	5400	5200	4500	1650
A.I.S.I.-316	7000	7000	6400	6200	6100	5100	2500
Monel 6500	6000	5400	5300	5200	1500	—	—

TABLE 2

MATERIAL	TEMPERATURE – °F						
	70°	200°	400°	600°	800°	1000°	1200°
Brass	5300	4250	1100	—	—	—	—
Carbon Steel	5950	5750	5450	5250	4000	1750	—
A.I.S.I.-304	7800	7050	6400	6150	6000	5190	1875
A.I.S.I.-316	7800	7800	7250	7100	6950	5800	2720
Monel	7450	6850	6150	6100	5940	1750	—



CATALOG NUMBERS					
ELEM. LGTH. A	INSERT. LGTH. U	SHANK DIA. Q	STEEL	304 SS	316 SS
4	2	3/4	FAS4	FAG4	FAJ4
6	4	3/4	FAS6	FAG6	FAJ6
9	7	3/4	FAS9	FAG9	FAJ9
12	10	3/4	FAS2	FAG2	FAJ2
15	13	3/4	FASA	FAG5	FAJ5
18	16	3/4	FAS8	FAG8	FAJ8
24	22	3/4	FAST	FAGT	FAJT

CATALOG NUMBERS					
ELEM. LGTH. A	INSERT. LGTH. U	SHANK DIA. Q	STEEL	304 SS	316 SS
4	2	3/4	VLS4	VLG4	VLJ4
6	4	3/4	VLS6	VLG6	VLJ6
9	7	3/4	VLS9	VLG9	VLJ9
12	10	3/4	VLS2	VLG2	VLJ2
15	13	3/4	VLVL	VLG5	VLJ5
18	16	3/4	VLS8	VLG8	VLJ8
24	22	3/4	VLST	VLGT	VLJT

ANSI flanged dwells are supplied as one unit with flange and well welded together.

Note: When ordering, specify flange size and rating as follows:

1" - 150 psi	1 1/2" - 150 psi	2" - 150 psi
1" - 300 psi	1 1/2" - 300 psi	2" - 300 psi
1" - 600 psi	1 1/2" - 600 psi	2" - 600 psi
1" - 1500 psi	1 1/2" - 1500 psi	2" - 1500 psi

- RF (raised face) furnished as standard.
- FF (flat face) optional at same price when specified.
- RTJ (ring type joint) available at extra cost when specified.

Brass cap and chain available to keep bore clean when not in use.

- .260" bore standard. If .385" bore is required:
 - (1) add the letter K to the end of the catalog no.;
 - (2) "Q" diameter is changed to 7/8" along the entire length of insertion ("U" dimension).

For pressure and temperature rating use Table 3 below.

Van stone type wells are intended for use with separate carbon steel backing flange (lap joint type).

Note: Backing flange not supplied unless requested. If required, specify flange size and ratings as follows:

1" - 150 psi	1 1/2" - 150 psi
1" - 300 psi	1 1/2" - 300 psi
1" - 600 psi	1 1/2" - 600 psi
1" - 1500 psi	1 1/2" - 1500 psi

**PRESSURE-TEMPERATURE RATING (Flanged Type)
(LBS. PER SQ. INCH)**

MATERIAL	TEMPERATURE - °F						
	0°	200°	400°	600°	800°	1000°	1125°
Carbon Steel	_____	UP _____	TO _____	_____	2500#	_____	_____
A.I.S.I.-304	_____	UP _____	TO _____	_____	_____	2500#	_____
A.I.S.I.-316	_____	UP _____	TO _____	_____	_____	_____	2500#
Monel	_____	UP _____	TO _____	_____	2500#	_____	_____